

The Academy



RUGBY/NORTHAMPTON



MEETING FACILITIES:

The Academy – perfectly suited to your business needs with:

- Air-conditioning and adjustable lighting in Albany and Stanford Suites.
- 14 meeting rooms
- 170 delegates maximum (theatre style).

MEETING EQUIPMENT:

- Overhead projector.
- Flip chart.
- Slide projector.
- TV and video.
- Front projection screen.
- Additional equipment can be provided.

MEETING SUPPORT SERVICES:

- 20% reduction on business services to the conference organiser.
- Photocopying service, 24-hour faxing and printing service.
- Secretarial support.

ACCOMMODATION:

- 88 well appointed guest bedrooms, including 40 Executive Rooms.
- Direct dial telephone and modem points.
- Mini bar.
- Iron and ironing board.
- Hairdryer.
- Power shower.
- Satellite TV.

DINING/ENTERTAINMENT:

- Traders Bar & Grill restaurant serves an extensive range of dishes from around the world, there are traditional favourites, regional specialities and a taste of the exotic.
- 24-hour room service.

SERVICES/FACILITIES:

- Business services.
- On-site free parking.

RECREATIONAL FACILITIES:

On site:

Spirit Health Club with:

- Gymnasium.
- Indoor swimming pool.
- Sauna.
- Whirlpool.
- Solarium.

Nearby:

- Whilton Mill events.
- Althorp House.
- Warwick Castle.
- Twycross Zoo.
- Drayton Manor Park.

HOLIDAY INN

RUGBY/NORTHAMPTON M1, JCT.18

Crick,
Northamptonshire NN6 7XR
England.

LOCATION:

Rail:

Rugby station 11.3 km.

Air:

Birmingham International airport 45 km.

Road:

Leave the M1 at junction 18. Follow the A428 to Crick. The Holiday Inn is 240 metres on the left.

TO BOOK A MEETING:

t: +44 (0) 870 400 9059

f: +44 (0) 178 882 3955

w: holiday-inn.co.uk

e: meetings-rugby@6C.com



Holiday Inn

The Academy

RUGBY/NORTHAMPTON

Room details

Room Name	Reception	Theatre*	Classroom*	Boardroom*	Banquet*	Dimensions	Height	Door H/W	Natural Daylight	Location
The Albany Suite:	180	170	80	70	110	18.5x7.1	2.7	2.0x1.8	4	G
Albany Room 1	80	60	30	28	40	7.1x8.0	2.7	2.0x1.8	4	G
Albany Room 2	90	70	45	42	60	7.1x10.5	2.7	2.0x1.8	4	G
The Stanford Suite	-	130	45	-	60	12.25x7.0	3.2	1.9x1.5	4	G
The Crick Room	20	30	12	16	-	6.3x5.2	2.6	1.9x1.6	4	G
The Kilsby Room:	15	25	-	14	-	7.2x4.7	2.6	1.9x0.7	4	G
Kilsby Room 1	-	12	-	8	-	4.7x3.8	2.6	1.9x0.7	4	G
Kilsby Room 2	-	12	-	8	-	4.7x3.8	2.6	1.9x0.7	4	G

*Available seating plans



Theatre



Classroom

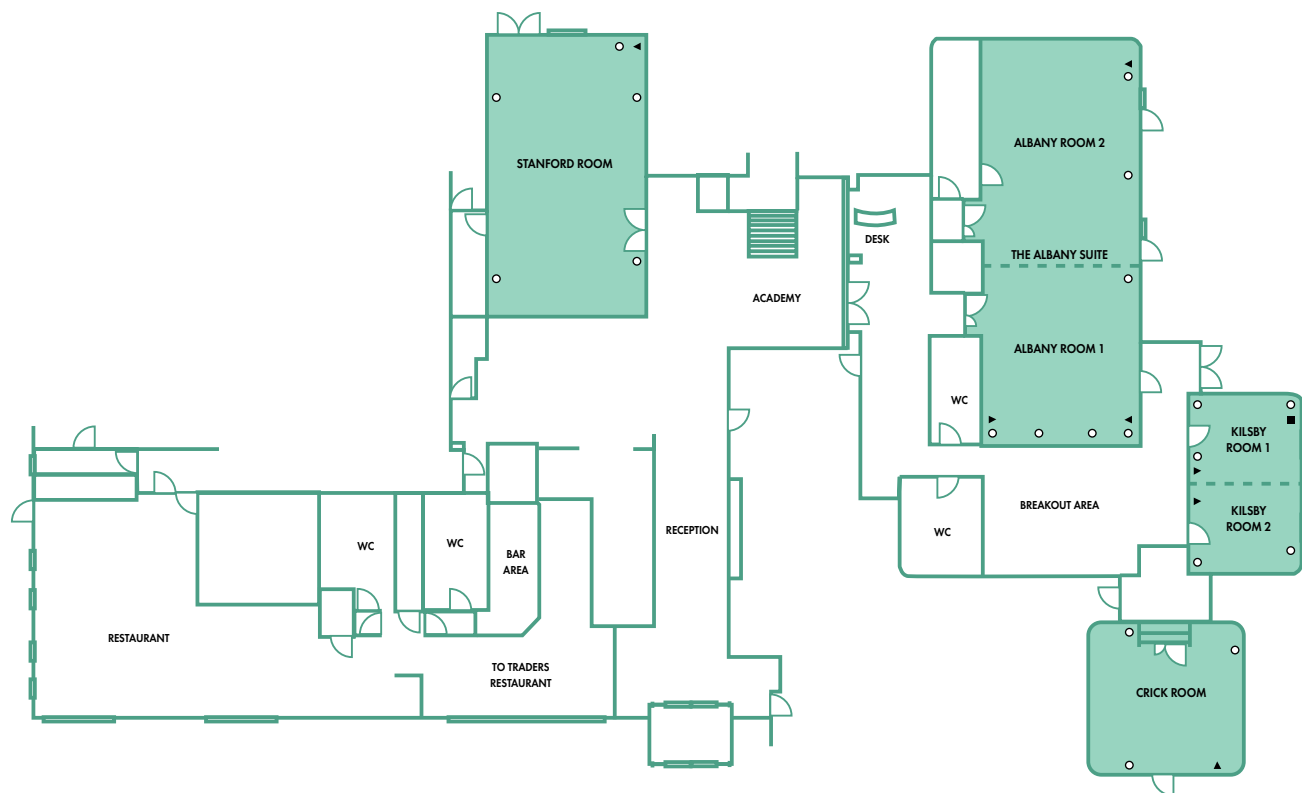


Boardroom



Banquet

All measurements are in metres



THE ACADEMY
CONFERENCE AND TRAINING SUITES

Holiday Inn

○ Powerpoint ▲ Telephone point ■ Telephone socket - - - Removable partition □ Dataport